



Inside Ashburton

July 2019

Paraburdoo welcomes new community complex

In This Issue

Greening Ashburton	2
Learning the ropes	5
Waste Facility underway	7
Sports Club opening	7
Great Panna Race	8
Pilbara to the Kokoda Trail	10



The Shire of Ashburton, in partnership with Rio Tinto and the State Government's Royalties for Regions program, administered through the Pilbara Development Commission, were proud to officially open the new Paraburdoo Sports, Fitness and Community Complex last month.

Celebrating with local stakeholders, the Hon Mick Murray MLA, formally opened the new facility, which has been a much welcomed addition to the town.

Designed to meet the growing needs of Paraburdoo, the complex aims to enrich the sporting, recreational and social endeavours of all residents and now provides a range of

modern and dynamic venues for clubs and groups to utilise.

Shire President Kerry White said the complex is testament to the commitment of Council, local Councillors, our partners and the community who have worked hard to create this iconic new facility for Paraburdoo.

"Already the new complex has started to make a positive difference to the community and enables greater opportunities for social events, sport and recreation," said Cr White. "It will be a hub for friends, families, colleagues, and even neighbouring Pilbara towns, to come together through sport or recreation and to enjoy a lifestyle that is synonymous with our region."

"I would like to acknowledge local member Vince Catania's role in helping secure the Royalties for Regions funding which made construction of the facility possible."

Kent Franey, general manager of Rio Tinto's Paraburdoo Operations, spoke at the opening of the facility, "Rio Tinto is proud to have committed \$8.5 million to the development and operation of this vibrant

new facility, which is a great example of what government, industry and community can achieve together."

"I would like to acknowledge our partners, the Shire of Ashburton, for their collaboration and dedication to a shared vision, bringing positive change that improves the liveability of regional towns like Paraburdoo."

The Paraburdoo Sports, Fitness and Community Complex includes new multipurpose sports court as well as the refurbishment of the existing courts, repurposing of the sports pavilion into the Karingal Neighbourhood Centre, a purpose built gym, pool side amenities, oval amenities, installation of a permanent softball diamond, improvements to the lesser hall and conversion of club rooms for storage.

This activity met Community Goal 4 of the Strategic Plan, Quality Services and Infrastructure.



Greening Ashburton

As part of the Shire's integrated landscape plan work has commenced on the Greening Ashburton program with 80 trees to be planted in Onslow.

Supported by a reticulated water supply, the first stage of the landscape plan will see trees planted in the following key areas in Onslow;

- Second Avenue near the new hospital and around the detention basin
- Third Avenue
- McGrath Avenue
- Onslow Road near the Rodeo grounds and old landfill site

Three types of trees have been chosen due to their suitability to Onslow's coastal

climate, as well as the drier conditions in our inland towns.

- *Delonix regia* (Common Name: Poinciana)
- *Tipuana tipu* (Common Name: Rosewood)
- *Bauhinia variegata* (Common Name: Butterfly tree)

Once arriving in Onslow, the trees have been cared for and acclimatised at the depot, prior to planting. They will be planted in batches as the reticulation is completed.

40 trees are also scheduled to be planted in Paraburdoo in the coming months, with the scope to extend the program over the 19/20 financial year.



This activity met Community Goal 3 of the Strategic Community Plan, Heritage and Environment.



Jubilee in the Dust
5
NAMELESS
JARNDUNMUNHA
FESTIVAL
TOM PRICE
Celebrating 50 years

JUBILEE

in the dust

SATURDAY 3RD AUGUST

A FORMAL 18+ EVENT | DOORS OPEN 6.30PM | TICKETS \$120
TOM PRICE COMMUNITY CENTRE CENTRAL ROAD

Rio Tinto
shire of Ashburton
reef to range

pop launch party
FRIDAY 16 AUGUST
 ONSLOW SPORTS CLUB



culinary showcase
SATURDAY 17 AUGUST
 BEN BULLOCK



EX MASTERCHEF CONTESTANT



EX MASTERCHEF CONTESTANT

culinary showcase
SATURDAY 17 AUGUST
 LILIANA BATTLE



FORMERLY FROM NOISEWORKS

headline act
SATURDAY 17 AUGUST
 JON STEVENS

onslow
Passion
 of the **Pilbara**
 16-17 august 2019

Amusement Rides • Live Music • Food Vans • Kids Activities • Market Stalls • Live Food Demos

- Live Music • Amusement Rides • Kids Entertainment and Activities
- Market Stalls and Community Groups • Food Vans
- Licensed Bar (Onslow Sports Club)
- Live Cooking Demonstrations and Food Sampling

Live Entertainment

Jon Stevens, Ben Mullen, Brian & Pete, Sophia Holmes, Brad Hall & The Bad Influences, The LuLus & Smalltown.

Follow the POP Festival on Facebook

FESTIVAL PARTNERS



Wheatstone Project



PREMIUM PARTNER



PARTNERS



MAJOR PARTNER



ASSOCIATES



Extended hours for Shire Offices

To provide an improved level of service to our residents the Shire Administration offices in Paraburdoo, Onslow and Tom Price will now be open from 8am – 4.30pm Monday to Friday. Pannawonica administration will be open from 10am – 4pm.

All calls outside of business hours are answered by our call centre provider, with queries then directed through to the relevant department.

Plus, don't forget to use our 'See it, Report it' form to report any damages or concerns within town. You can access the online form on the Shire's website at www.ashburton.wa.gov.au

Ashburton achieves high score

The Department of Local Government has announced the most recent outcomes of their Financial Health Indicator, which sees the Shire of Ashburton having achieved a positive scorecard which is well above the average.

The Financial Health Indicator is, in essence, a scorecard of budget management rather than a scale of wealth. It assists the Department of Local Government to monitor how well each Council is managing their financial responsibilities including budget planning, cashflow, expenditure and debt.

These latest performance indicators give the Shire a score of 89/100 for the last financial year, an improvement from the previous score of 67/100. This achievement reflects the dedicated focus by Council and Shire Staff on developing a framework of improved processes and planning to ensure a sustainable future for our region.

Shire President Kerry White says the Shire of Ashburton is proud to have

earned a high score which reinforces our commitment to effective financial planning, particularly within an increasingly tight fiscal environment.

"The focus of Council, and that of the Shire, is to continue to identify opportunities for the effective management of the Shire's finances, which includes the sustainability of our assets and striving to provide exemplary services to our community and customers," said Cr White.

"It needs to be recognised that the Shire of Ashburton is unique amongst local governments due to its size, number of towns, road infrastructure and compelling environment. We will continue to prioritise our spending and to make financial decisions that will serve us all well into the future."

This activity met Community Goal 5 of the Strategic Community Plan, Inspiring Governance.



Council seeks bi-partisan approach to Wittenoom

At the May Ordinary Meeting of Council, Ashburton Council congratulated the State Government on introducing the Wittenoom Bill as well as sought a cooperative approach from both political parties.

Shire President Kerry White said that Council supports the Wittenoom Bill and trusts it gets through without delay, and urged the State Government to also treat the issues associated with the Wittenoom-Roebourne Road with absolute priority.

'Council has expressed to both the Premier and the Leader of the Opposition the need for a bi-partisan political approach to effectively address

the issues associated with the former Wittenoom townsite and the Wittenoom-Roebourne Road,' said Cr White.

Historically, the Wittenoom-Roebourne Road provided the main transport link between the Wittenoom minesite and the port. The road is known to be still littered with the debris of bagged asbestos. Due to the potential health and safety risks, the Shire of Ashburton has been unable to repair and maintain the road, and its deterioration has had a considerable impact on local pastoralists.

'Council seeks a meaningful and cooperative approach from the Government and Opposition, which actively works to address the issues

associated with the former Wittenoom townsite and the Wittenoom-Roebourne Road.'

'The Ashburton Shire Council calls for the establishment of a Commission who would be responsible for the State ownership of the contaminated areas of Wittenoom and surrounds, the protection of the community through prohibition of access and the rehabilitation of land.'

While Council congratulates the State Government for its genuine action on introducing the Wittenoom Bill we hope to see a true commitment to resolving these wider issues.

Learning the ropes



Max, Dre and Blair join the Shire team

Deciding what you want to do when you leave school is a daunting prospect for many students, particularly when you live in a remote regional town.

Three Year 11 students from Tom Price Senior High School have recently joined the Shire as part of a 10 week vocational training program, which aims to provide

students with a hands-on 'taste' of what certain trades and occupations are like.

Working one day per week, Max, Dre and Blair have joined the Town Maintenance team and are learning the ropes of parks & gardens maintenance.

It has been an absolute pleasure having these students as part of the Town Maintenance

team and providing them with opportunities to learn new skills and develop a greater understanding of potential career paths. We wish them every success for their future.

This activity met Community Goal 1 of the Strategic Community Plan, Vibrant and Active Communities.



Reef to Range Photo Competition

Grab your camera and get your entries in for the chance to win some great cash prizes.

With a total of \$6,000 up for grabs across various categories there's plenty of opportunity to score a fantastic cash prize while sharing your stunning photos taken throughout the Shire of Ashburton, in the Pilbara region. There are prize categories for both youth and adult photographers.

For full competition details, terms and conditions, as well as the entry form, check out www.tomprice.org.au or www.ashburton.wa.gov.au



REEF TO RANGE

PHOTO COMPETITION

We're looking for photos worth a thousand words

INLAND PILBARA
Adult Prize: \$1,000
Youth Prize: \$500

COASTAL PILBARA
Adult Prize: \$1,000
Youth Prize: \$500

PEOPLE'S CHOICE AWARD
Prize: \$3,000
(from both adult and youth entries)

\$6,000
IN CASH
PRIZES TO
BE WON!

Visit www.tomprice.org.au, www.ashburton.wa.gov.au for your entry form and T&Cs.

Email up to 2 images per category along with entry form to: Visitor.Centre@ashburton.wa.gov.au

Facebook: [tompricevisitorcentre](https://www.facebook.com/tompricevisitorcentre)
Twitter: [@TomPriceVisitorCentre](https://twitter.com/TomPriceVisitorCentre)



Christmas comes early to our inland communities



The Rio Tinto Picnic Days are a drawcard on the calendar for our Inland Pilbara towns of Tom Price and Paraburdo. The events are family friendly, and bring the community together, celebrating the things that made our inland towns great places to live and work.

The first Picnic Day was held more than ten years ago, as a traditional Christmas celebration, however Christmas now comes a little earlier to these towns as we make the most of the cooler weather to celebrate the hard-work and dedication of our people.

This year's event showcased lots of entertainment including local talent Jemma Beech along with Perth band Little Belle, Fingers Mitchell Cullen and the standout favourite with the kids, Hey Duggie.

Families enjoyed delicious food before hitting the giant inflatables and games zone, go carts and gaming bus with the events ending with a bang, with locals treated to an impressive display of fireworks.

Kent Franey, general manager Paraburdo Operations enjoyed his tenth Picnic Day and said, "our employees and their families are the backbone of our communities, and the Picnic Days are an important opportunity to recognise and thank the people who



contribute to our operations and towns, and make them the vibrant places they are today".

Jamie Robinson, general manager Tom Price and Marandoo joined the Tom Price festivities recognising the hard work that went into making it all happen. "The 2019 Picnic Day events came to town bringing with them a range of activities and family fun. The event wouldn't have been possible without help from our teams and volunteers on the ground – your commitment and community spirit is what makes our community so special, thank you," said Jamie.

This year Rio Tinto engaged Wrapped Creations, a Pilbara Aboriginal business to deliver the event, working alongside the

Community Engagement team. Rio Tinto would like to express their sincere thanks to the team at Wrapped Creations for their dedicated effort and hard work over the weekend.

If you enjoyed the events Rio Tinto would love to hear from you. If you have any feedback please reach out to RioTinto. CommunityInvestment@riotinto.com and be sure to share your photos tagging #RioTintoPicnicDay2019.

Class IV Waste Facility underway

The Shire of Ashburton is in the process of establishing a new regional waste management facility in Onslow. The Pilbara Regional Waste Management Facility (PRWMF) will be an integrated facility consisting of a green waste, construction and demolition waste, liquid waste, tyre mono-cell and Class IV landfill. The Class IV landfill will be the only such facility within North West Australia accepting the low level hazardous waste materials arising from the resource sectors.

The total development footprint is approximately 67 hectares.

At a Special Meeting of Council held on 29 May, and following the Request for Tender process, Council awarded a contract to NTC Contracting for earthworks required to create an access road to the site of the PRWMF, which will then enable construction works for the facility to begin. As this accessed road will initially carry vehicles associated

with the construction of the PRWMF, it will be unsealed during this phase. After completion of the PRWMF, any damage to the access road will be repaired and a bituminous seal applied to ensure all-weather access is provided to users of the new facility.

The next stage of the construction process is to issue a tender for construction, which we expect to be released in the coming months.

The new Regional Waste Management Facility will be built, and operate to, environmental best practice and is expected to be completed early 2020. Funding for the \$13m Facility is a collaboration from the Federal Government (\$9m), Chevron-operated Wheatstone Project (\$2m) and the Shire of Ashburton (\$2m).

This activity met Community Goal 4 of the Strategic Community Plan, Quality Services and Infrastructure.



See it, report it!

The Customer Action Request (CAR) is an online form designed to enable people to directly report issues to the Shire that need our attention.

If you see something you think we should know about, please visit the Shire's website at www.ashburton.wa.gov.au and select the 'See it, report it (CAR form)' link on the home page.

Your completed CAR will be sent to the relevant Shire Officer and we will endeavour to provide you a response within five business days.



This activity met Community Goal 4 of the Corporate Business Plan, Quality Services and Infrastructure.



Onslow Sports Club opening



The Onslow Sports Club officially celebrated the opening of their new facility on Friday 17 May with an evening of dinner, live music and dancing.

Having recently undergone a major transformation, the Onslow Sports Club now boasts a larger indoor area as well as a new enclosed outdoor courtyard, making it better suited to a variety of events and functions.

With a new modern look and improved amenities, the Club continues to be a hub for social and recreational activity for residents.

The redevelopment is a testament to the collaborative efforts of the Shire, the Chevron-operated Wheatstone Project,

the Department of State Development and valuable input from the Onslow Community. With live music from popular duo Pete and Bryan, as well as a delicious spit roast and BBQ, the opening celebrations were plenty of fun and a great way to enjoy the new and improved Sports Club.

This activity met Community Goal 1 of the Strategic Community Plan, Vibrant and Active Communities.



Great Panna Race

What a great weekend in Pannawonica with the 'Great Panna Race'.

Teams were sent off with a list of tasks and activities to complete, while keeping their eye on the prize to be the first team to cross the finish line.

Tasks included word unscramble, napkin folding, shopping, guess the sense, gardening, ball skills, sink a pool ball, disk golf, watery fun, fishing for ducks, civil arrest, pirate seek, firefighting and sensory play.

Some teams did really well, while others were challenged, however everyone had a lot of fun with plenty of laughs along the way.

The finale to the great Panna Race was a community BBQ catered by Sodexo at the Pannawonica Sporting Club, with live entertainment provided by "Living the Dream."

Congratulations to our prize winners;

First Place: Aloha Panna

Best Dressed Team: Were All Mad Here

Best Team Name: Rockin Rodeo

Best Challenge from Club/Business:
Pannawonica Playgroup

A big thank you to Rio Tinto and all of the local clubs, groups and businesses who once again made this event so much fun.

- Sodexo Tavern
- Sodexo Supermarket
- Pannawonica Junior Sports
- Sixth Spice
- Pannawonica Parents and Citizens
- Pannawonica Community Garden
- Pannawonica Police Service
- Pannawonica Volunteer Fire and Rescue
- Pannawonica Sporting Club

- Pannawonica Playgroup
- Pannawonica Kindygyim
- Happy Splash Swim School
- Pannawonica P&C Disk Golf

We look forward to next year.

This activity met Community Goal 1 of the Strategic Community Plan, Vibrant and Active Communities.





Trying to keep things affordable

Each year, the Shire spends considerable time reviewing our operating costs in line with our fees and charges. While a number of fees are determined by a statutory process, the Shire is very mindful of keeping fees and charges at an affordable level so our services and facilities can be used by the community as intended.

For the 2019/2020 financial year the Shire has managed to keep a number of key fees and charges unchanged, and some even reduced, as we commit to supporting local business, tourism development and our community.

Entry into the swimming pools, the Onslow gym as well as services provided in the Libraries and Visitor Centre ie photocopying, faxing, laminating and printing, will not be increased. Accommodation fees at the Ocean View Caravan Park in Onslow, as well as Visitor Centre memberships for tourism operators

and local business will also remain unchanged.

To reduce the number of wandering dogs, and to make it a more affordable option for families when travelling, the Shire's Dog Kennelling fees have been reduced to \$25 per night.

The costs of commercial waste collection has remain unchanged and the Shire's waste disposal charges have been simplified, with some costs removed and the fee categories more clearly defined.

The disposal of general household and green waste remains a free service.

A full list of fees and charges can be viewed on the Shire's website at www.ashburton.wa.gov.au

This activity met Community Goal 5 of the Strategic Community Plan, Inspiring Governance



From Pilbara mountains to the Kokoda Trail



Earlier this year the Shire's Director Corporate Services, John Bingham, achieved a bucket list item by trekking the Kokoda Trail. The 125 kilometre single file track, which traverses both beautiful and difficult terrain, is challenging to even the most experienced adventurer. Hot and intensely humid the trek tests both physical and mental endurance.

Before commencing the trail, you are given a memorial card of a fallen soldier to carry with you for the 8 days of the trek. John carried the memorial card of Thomas Frederick Johnson, of the 22nd battalion, a young Australian who paid the ultimate price at Templeton's Crossing in October 1942.

"In April I trekked across the 125km of the Kokoda Trail to acknowledge the sacrifice and honour the memory of Private Johnson and hundreds of other young Australian men," said John.

"It is an adventure I will never forget."

Having four of the tallest mountains in WA on our doorstep, John regularly trekked Mt Nameless, Mt Bruce, Mt Sheila and Mt



Meharry in preparation for his adventure.

"While having always enjoyed hiking, being able to climb these mountains most weekends was great training."

"If you enjoy endurance challenges I definitely recommend putting the Kokoda Trail on your travel list. Apart from the physical achievement, it is some of the most spectacular countryside you will see, and of course, being able to honour the fallen is a very rewarding experience."

In 1942 Australia fought the Japanese in PNG to defend the mainland in what later became known as the Kokoda campaign.

For hundreds of young Australian soldiers the campaign was about four things: Courage, Endurance, Mateship and Sacrifice.

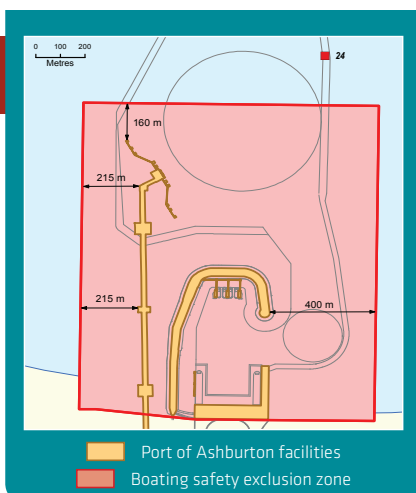
The Courage to stare fear down.

The Endurance to push one's body beyond its limits.

The Mateship to make sure your buddy stayed alive; and

Sacrifice - to pay the ultimate price for your Country.

'It has been said that Gallipoli created a nation, but Kokoda saved a nation. At Gallipoli we fought for the British Empire, but at Kokoda we fought for Australia.'



SAFETY NOTICE TO ALL BOAT USERS

With large ships constantly entering and leaving port waters, it's up to you as a responsible recreational craft skipper to ensure you and your passengers remain safe.

You **MUST** stay well clear of the shipping channel and large ships and only cross the channel when safe to do so.

Remember, you're the skipper, and you're responsible.



FOR MORE INFORMATION

(08) 9159 6556 | dampier.vts@pilbaraports.com.au
www.pilbaraports.com.au



Upcoming Events



July 2019

Date	Event	Location
JULY		
Wednesday 3 July	Onslow Keepers	Onslow Community Garden
Thursday 4 July	NAIDOC celebrations	Paraburdoo
Friday 5 July	NAIDOC celebrations	Pannawonica
Mon 8 – Fri 19 July	School Holiday Program	All towns
Wednesday 10 July	Kite Display & Lolly Pop Drop	Paraburdoo
Fri 12 – Sun 14 July	NAIDOC Darts Competition	Onslow Sports Club
Tuesday 16 July	Council Meeting	Clem Thompson Sports Pavilion, Tom Price
Tuesday 16 July	Family Story Time	Pannawonica Library
Friday 19 July	Jetpack	Pannawonica Sporting Club
AUGUST		
Saturday 3 August	Nameless Jarndunmunha Festival Ball	Tom Price
Sunday 4 August	Westcarpade	Pannawonica Sporting Club
Wednesday 7 August	Onslow Keepers	Onslow Sports Club
Fri 9 and Sat 10 August	Nameless Jarndunmunha Festival	Tom Price
Tuesday 13 August	Council Meeting	Onslow Shire Complex
Tuesday 13 August	Erth's Dinosaur Zoo	Tom Price
Wednesday 14 August	Erth's Dinosaur Zoo	Paraburdoo
Fri 16 and Sat 17 August	Passion of the Pilbara Festival	Onslow
Monday 19 August	Erth's Dinosaur Zoo	Pannawonica
Wednesday 24 August	Erth's Dinosaur Zoo	Onslow
SEPTEMBER		
Thur 5 – Fri 6 September	Robe River Campdraft	Pannawonica
Saturday 7 September	Robe River Rodeo	Pannawonica
Wednesday 18 September	Council Meeting	Mayu Maya Centre, Pannawonica
Thursday 19 September	Talk like a Pirate Day	Pannawonica Library

Administration Centre

Poinciana Street, Tom Price WA 6751
PO Box 567

Phone: (08) 9188 4444
Freecall: 1800 679 232
Fax: (08) 9189 2252
Freecall Fax: 1800 655 086

Email: soa@ashburton.wa.gov.au

www.ashburton.wa.gov.au

Inside Ashburton Publication is produced by the Shire of Ashburton.

Editor: Narelle Steele

Editorial contributors: John Bingham, Rio Tinto, Shire of Ashburton staff

Photo contributors: John Bingham, Rio Tinto, Shire of Ashburton staff, Onslow Sports Club, Jasmine Creative, Pilbara Ports Authority. *Apologies to Nathan Niaga who we accidentally omitted from the May edition of Inside Ashburton. Nathan provided some great photos of the Paraburdoo community events.*

Template Design: Design Collision

Issue Design & Printing: Advance Press

If you have a story for the next "Inside Ashburton" contact media@ashburton.wa.gov.au

Find us on Facebook: facebook.com/shireofashburton

DISCLAIMER: This newsletter is for general information purposes only. The views expressed in this newsletter are not necessarily those of the Shire of Ashburton. The Shire has taken all measures to ensure the contents in this publication is correct, however it accepts no responsibility for the accuracy or the completeness of the material. Readers are advised not to rely solely on this information when making any decision. The Shire of Ashburton reserves the right to change the publication as it sees fit. The Shire of Ashburton disclaims any responsibility or duty of care towards any person for loss or damage suffered as a result of this newsletter.

COPYRIGHT: The contents of this newsletter are subject to copyright under the laws of Australia. The copyright in materials in this newsletter as a whole is owned by the Shire of Ashburton. Third parties may own the copyright in some materials incorporated into this newsletter. In reference to the Copyright Act 1968, please feel free to reproduce parts of this newsletter for personal, educational or any other non-commercial purposes, provided that the Shire is aware of this.