



# Inside Ashburton

December 2018

## Onslow celebrates



**Onslow residents booked the babysitters and donned their finest as they enjoyed the annual Gala Ball with an evening of dancing, food and plenty of fun.**

Now in its third year, the Gala Ball is a popular event on the social calendar and provides the vibrant community with a chance to frock up and socialise with fellow residents.

Back by popular demand, the talented Howie Morgan Trio kept the dance floor busy with their repertoire of blues, soul and pop music. Guests were kept well fed and watered throughout the evening,

with an assortment of delicious catering by the Onslow Beach Resort and the beverages served by the Onslow Sports Club.

Shire President Kerry White said it was great to see the RM Forrest Hall transform for the Gala Ball, and to have the event continue to be a great success.

“Each year the Gala becomes more popular and this year was no exception,” said Cr White. “Residents enjoy the opportunity to have a night out, and to embrace living in Onslow with both old and new friends. It is definitely a highlight of the social calendar.”



### In This Issue

School Holidays	2
Office closure over festive season	2
Lifeguard training	3
Leaving pets at home over the holidays	3
Roebourne-Wittenoom Road	4
Sundowner celebrations	5
Most Outstanding Small Club	5
Comedy-music duo wowed the Pilbara	6
Disc Golf a hit in Ashburton	6
Concessions for ratepayers	7
Snake safety and your local Reptile Removers	10

Chevron Australia’s Community Engagement Supervisor Erin Glancy said the Chevron-operated Wheatstone Project was proud to support this great event again through its ‘Working Together for Onslow’ partnership with the Shire of Ashburton.

“It was great to see so many people embrace the opportunity to dress up and enjoy a night out with fellow community members,” Mrs Glancy said.

“Our Working Together for Onslow partnership continues to deliver events that help bring the community together and make Onslow a great place to live and work.”

The Shire of Ashburton would like to thank the Chevron-operated Wheatstone Project for their contribution in making this year’s Onslow Annual Gala another huge success.



This activity met Community Goal 1 of the Corporate Business Plan, Vibrant and Active Communities





# School Holidays were plenty of fun

**School terms seem to fly past and now the end of the year is looming. While it seems like an eternity ago, the September/October school holidays were certainly plenty of fun.**

Thanks to the Shire of Ashburton's partnership with Rio Tinto and the Chevron-operated Wheatstone Project, children were kept entertained with a diverse line-up of activities to choose from.

Sports fun inflatables, Halloween craft, movie nights, yoga, squash and discos gave kids plenty to do, and the robotics and coding workshop gave participants an insight into the future.

In Tom Price the nerf gun wars proved extremely popular, with the sessions booking out in record time and an additional timeslot needed. The Tom Price Youth Support Association hosted

a chill-out session with DJ, video games and a pool tournament, and was a great night enjoyed by local teens.

Paraburdoo kids had the chance to learn new skills in the Junior Fire Fighting training, or for those brave enough, get up close to the Pilbara's slithery friends during the Junior Snake Handling workshop.

Learning how to make healthy treats gave parents in Pannawonica some hope, as their kids were equipped with new skills in the kitchen, and those who like to be active were kept occupied with the junior squash challenge, nerf gun wars and sports inflatables.

Junkadelic returned to Onslow with their popular creative music program which culminated in a great community concert performed by the children. Learning fundamental first aid skills,

or the art of face painting for the more creative, meant that there was something for everyone.

Shire President Kerry White said the School Holiday Program provided valuable opportunities for kids to learn new skills and experience new things, as well as being kept busy and active.

"School holidays are often difficult for parents and the range of activities help to provide some relief," said Cr White. "In addition to giving our local children fun things to do, the program is a great opportunity to teach kids new things and broaden their knowledge and interests."

The Shire would also like to thank Sodexo, Tom Price Youth Support Association and Nintirri who provided valuable support in hosting a variety of the programs.



This activity met Community Goal 1 of the Corporate Business Plan, Vibrant and Active Communities

# Office closure over festive season

Shire offices in Tom Price, Paraburdoo, Onslow and Pannawonica will close over the Christmas and New Year festive period on Friday 21 December, re-opening 9am on Wednesday 2 January 2019.

Emergency contact, rubbish collection and waste site opening times during this period are available on the Shire's website.

The Tom Price Visitor Centre will be closed on the 25 and 26 December and will re-open on 27 December. It will also be closed on 1 January 2019.

We wish all of our residents a very happy and safe festive season.





# Lifeguard training

Shire of Ashburton Pool Managers and Lifeguards were recently put through their paces during their annual Pool Lifeguard requalification course prior to the summer pool season.

The Royal Life Saving Society Pool Lifeguard Requalification course is held each year to ensure our staff have the highest level of skills required to safely operate our Aquatic Centre's in a fun and safe manner.

A Pool Lifeguard requires a high degree of judgement, knowledge, skill and fitness in both day to day Lifeguarding and how to manage the stress of an emergency. Annual and regular in-house training helps sustain the lifeguard's confidence and ability to prevent accidents and respond competently when they occur.

In addition to a theory component, the Shire's pool staff had to demonstrate rescue and resuscitation, spinal rescue and management as well as respond to a variety of emergency scenarios.

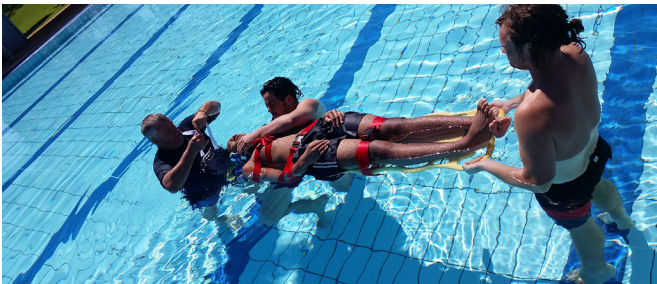
While all our staff passed with flying colours, safety is everyone's responsibility and we remind all pool goers to be water safe, abide by the pool rules and supervise your children at all times.

At all Shire Aquatic Centre's, children under 5 years must be accompanied in the water by a supervising parent/guardian. Children under 10 years must be accompanied and constantly supervised while at the pool.

If you are interested in becoming a Pool Lifeguard please contact your local Pool Manager for more information.



This activity met Community Goal 5 of the Strategic Community Plan, Inspiring Governance



Lifeguards earn their requalifications



# Leaving pets at home over the holidays



While some dogs are quite happy to be left alone for short periods, others easily become distressed when separated from their owner.

Research suggests that nearly half of all dogs react badly to being left alone and will often bark, howl or become destructive.

It may not be obvious that your dog becomes anxious when left alone and you may be completely unaware that your dog has been suffering. Unless you find evidence of destructive behaviour when you return home, or receive complaints from your neighbours, the anxiety and distress can go unrecognised.

Over the holiday periods Ranger Services receive a noticeable increase in barking dog complaints and find a number of dogs in distress. For many dogs, tasking a friend to pop in and feed them – or walk them in the evenings – is not enough to keep

them calm when separated from their owner. They quickly become anxious and resort to howling or barking which impacts the surrounding neighbours.

Rangers also find and collect a higher number of wandering dogs that have been left alone and, fuelled by anxiety and boredom, do what they can to find a means of escape. Dogs who can't be returned home are normally impounded which results in fees and charges, which are payable by the owner prior to the animals release.

For the safety of your pets, and the harmony of your neighbours, please make suitable arrangements when you are planning to leave town for work or holidays. House sitters, the Tom Price kennels – or even kennel facilities at your holiday destination – all provide safe solutions for the well-being of your pets.

# Roebourne-Wittenoom Road

**As you may have seen in the media earlier this year, the State Government has delayed the sealing of Stage 3 of the Roebourne-Wittenoom Road, most commonly referred to as the Tom Price to Karratha Road, as a result of asbestos concerns.**

Due to anecdotal evidence of asbestos on the Tom Price to Karratha road and surrounding bushland becoming increasingly likely, the Shire was advised by Worksafe earlier this year to ensure all staff working to maintain the road had a safe operating environment. With the potential presence of asbestos on the road and the activities of graders, a suitable asbestos safe working management plan was required.

Evidence suggests that bagged asbestos, which was transported by truck from the mine to port, had on occasions over the life of the Wittenoom mine, fallen off trucks carrying the bags and, over the years, been subjected to the Pilbara elements.

The Shire last undertook grading of sections of Stage 3 in March this year.

While the Shire sought to establish a suitable asbestos safe working management plan, road maintenance staff were taken off this road project and moved to other road programs. Ceasing maintenance on the road was a less than favourable outcome, though it wasn't deemed a significant issue at the time as the road was in reasonable condition and Main Roads WA (MRWA) were

scheduled to commence the works for the sealing project shortly thereafter.

However, the identification of potential asbestos concerns meant that MRWA was forced to delay the sealing works on Stage 3 of the Karratha Tom Price Road until they had commenced and completed a more detailed asbestos survey of the area. With neither the Shire or MRWA able to maintain the road without the necessary asbestos management plans, works on the road ceased.

Unfortunately the deteriorating condition of this road has been impacted negatively by timing and coordination. To ascertain an approved asbestos management plan for roadworks within this environment takes considerable survey and analysis, and time.

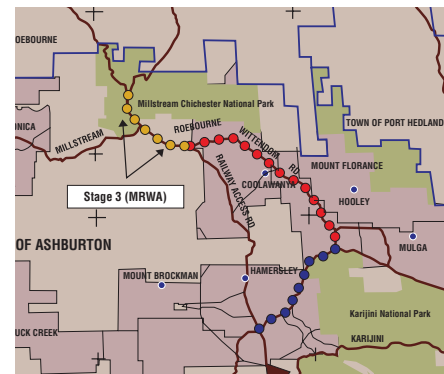
The Shire of Ashburton is thankful to MRWA who, in recognition of the delay to the sealing project, has agreed to assist the Shire by undertaking maintenance on this section of the road after they have completed current asbestos survey and clean-up operations. MRWA has advised that they will progress the maintenance on that section ASAP but this may not be possible until after December following completion of the clean-up and development/approvals of management plans for the works.

In the meantime, the Shire recognises that the road has now unfortunately deteriorated to an extremely poor state and we strongly urge people to avoid

using this road. While MRWA has advised that in December maintenance is expected to begin, it can also be expected that road users will experience delays and disruption when using this section of the road once sealing works commence next year.

It is widely agreed that the road is a vital strategic link for the community, the regions pastoralists and local industry and we are well aware of the impact the inability to use this road has. However safety has to come first and we urge travellers to take this into consideration.

The Shire of Ashburton is committed to improving the quality of our regional road network and will invest \$30m this financial year into road maintenance and upgrade. Covering a geographical area half the size of Victoria, our network of roads are vital to our local industries and residents, and the Shire is extremely committed to ensuring our roads are safe.



## Travelling during the holiday season

**If you are planning a road trip during the holiday season please take all necessary precautions to stay safe. With both wet season and bushfire season upon us, travel can often be impeded by floodwater or fire.**

Before you begin your journey please take the time to check for road condition updates via the following key websites;

[www.emergency.wa.gov.au](http://www.emergency.wa.gov.au)

[travelmap.mainroads.wa.gov.au](http://travelmap.mainroads.wa.gov.au)

Please make sure it is safe to travel and select an alternative route if you need too.

Stay safe and enjoy the holidays.

# Sundowner celebrations

**Residents in Tom Price and Paraburdoo recently celebrated living in our remote yet vibrant communities at a local sundowner with a range of entertainment, activities and dinner options.**

Made possible through a partnership between the Shire of Ashburton and Rio Tinto, the showcase events aim to create a strong sense of place, community pride and enrichment of social connections.

In addition to a variety of stalls and activities hosted by local clubs, groups and small businesses, residents were impressed by performances from the Paraburdoo school choir, Pilbara Ukulele Group, From Dust Creative Arts dance school as well as a number of talented local singers.

After browsing through the many stalls, friends gathered on the lawn to enjoy the entertainment as the sun set on another beautiful Pilbara day.

Shire President Kerry White says that each town has plenty to offer and with new residents always joining the community, it is important to provide opportunities to come together.

“The annual sundowner events are a popular way to get out and meet new people, to learn about your town and to encourage support of our local groups and businesses.”

Rio Tinto’s Plant Operations Manager Geoff White attended the Paraburdoo Sundowner and was impressed with the warm welcoming atmosphere and community spirit displayed at the event.

“Rio Tinto’s participation at both the Tom Price and Paraburdoo Sundowner events provided an opportunity to collaborate with local businesses and community groups to showcase our support and celebrate our vibrant community.”

The Shire extends a big thank you to all of our businesses, clubs and groups

who contributed their time and efforts, as well as to our event partners who helped bring the sundowners to fruition.



This activity met Community Goal 1 of the Corporate Business Plan, Vibrant and Active Communities

# Most Outstanding Small Club

**It may be a small club in a remote location, but Tom Price Tennis Club recently claimed victory in the Most Outstanding Small Club category at the 2018 WA Tennis Industry Awards.**

The club was a joint winner in the Most Outstanding Small Club category, alongside Safety Bay Tennis Club.

Tom Price Tennis Club was one of three finalists for the Most Outstanding Small Club category, and was a standout performer in their class, owing largely to the club’s inviting culture, accessibility to the community, and implementation of Tennis Australia programs and competitive opportunities for players.

The club was recognised for its efforts in promoting and growing tennis within its remote and transient community.

Tom Price Tennis Club has built strong, positive partnerships and as a result has successfully grown their membership from 23 members to 213 over the past two years. This growth has stemmed from the ANZ Tennis Hot Shots

Community Play program and the Adults “Rusty Racquets” Group Classes.

Pathways for junior development are also integrated into playing programs, ensuring remote living juniors do not miss out on the opportunities their metropolitan counterparts would receive.

The Club welcomes new and returning members at the commencement of each season by hosting a free open play day. They have also partnered with the Shire and delivered two successful school holiday Hot Shots Programs that resulted in 30 new junior members for the club.

The Club hopes to continue its success into the 2018/2019 season, strengthening external partnerships and providing social, competitive and coaching opportunities for the residents of Tom Price and surrounding communities.

President of the Tom Price Tennis Club, Pauly Bradley is delighted with the club’s achievements.

“The Tom Price Tennis Club is extremely honoured to accept this award. This award represents a lot of hard work and dedication by club volunteers over the past three years to offer playing opportunities for Tom Price residents”.

“ANZ Hot Shots has been a key driver for membership growth and retention, as well as social play and school holiday tennis programs” Mr Bradley said.

Congratulations to the club for their well-deserved award, and for providing many local families with great sporting and social opportunities.



Club Secretary Alyse Daams



# Comedy-music duo wowed the Pilbara

Residents in Tom Price, Paraburdoo and Pannawonica enjoyed a night of laughs with Australia's funniest First Nations comic, Dane Simpson and his band.

Dane is one of Australia's fastest rising comedy stars, proving that the best comedy can be found in the most genuine human experiences. Comedians don't really need backing bands, but Dane Simpson has one anyway. Dane's got the laughs and he's joined by musician Rob Edwards to bring some tunes to deliver an engaging show of music, stand-up as well as some general horsing around with the crowd.

The Great Danes tour was made possible thanks to support from Rio Tinto, Nintirri and Karingal Neighbourhood Centre, and in association with Country Arts WA.

Not to miss an opportunity, Dane Simpson also gave the communities a chance to star in his upcoming Dane Dance YouTube video with residents invited to be part of the filming in Tom Price and Pannawonica. We look forward to seeing the final product featuring some of our local talent.

Country Arts WA and Act-Belong-Commit are touring the Great Danes through regional WA this year as part of Lotterywest Shows on the Go, a long-running program focusing on developing regional arts presenters by providing access to affordable professional performing arts.



This activity met Community Goal 1 of the Corporate Business Plan, Vibrant and Active Communities

# Disc Golf a hit in Ashburton

Tom Price and Paraburdoo are home to two new disc golf courses, making the Shire of Ashburton the first remote Australian mining town to embrace this sport.

The idea of disc golf was originally brought to the attention of the Shire by Tom Price Baptist Church pastor Gavin Douglas, who had been participating in the sport since 2005.

The sport involves throwing a disc at a target using rules similar to golf, with both the Tom Price and Paraburdoo courses each consisting of nine holes which are 50m-100m long.

Players use three different types of discs — drivers, mid-range and putters, with different discs made for all types of weather conditions.

Designed and installed by Recreational Activity Design, and opened to the public in September, the courses have been popular with kids, teens and families.

"Disc golf is about a facility not a club, you can rock up and throw a disc at the park without having to sign up," Mr Douglas said. "One day it would be great to see tournaments taking place but for now it's just about having fun with friends".

The Shire injected \$42,400 into creating the two courses, including the cost of community consultation, planning, acquiring materials and the installation process.

Shire President Kerry White said it was great to see the new sport prove popular so quickly within the community.

"Sport and recreation is important to the social fabric of the towns in the Shire," said Cr White. "Disc golf is a great addition as it suits all ages and abilities and promotes families and groups to participate together."



This activity met Community Goal 1 of the Corporate Business Plan, Vibrant and Active Communities



# Concessions for ratepayers

**Due to the Landgate re-valuations this year and the removal of rate concessions for Onslow residents, for some property owners the result has been the 2018/19 rates have increased significantly - in some cases by thousands of dollars.**

On behalf of a number of concerned property holders, the Shire was asked to gain clarification from Landgate as to why valuations in some towns had reduced so dramatically, without any obvious changes to local supply and demand.

Land valuations form only one component of the process for determining local rates, and with no decrease in the volume or quality of services to be provided, rates revenue must still meet the demands of service provision.

In addition to seeking further information from Landgate, the Shire held a community consultation with residents

in Onslow on Monday 8 October where genuine concern was expressed about the amounts to be paid.

As a result of this meeting, the feedback gathered was presented to Council, who after listening to all aspects of the issue, considered how they could provide their ratepayers with financial relief.

Shire President Kerry White said that after collecting feedback from local residents Council was very concerned about the impact the 2018/19 rates were having on many members of our communities.

With this in mind an absolute majority of Council agreed to broaden the offer of rates concessions to those residential property owners in each town-site with ownership of no more than two properties.

"Council were happy to endorse a concession that would provide financial relief to many of our residents, in a way

that was fair and equitable across our towns."

"Rates are a vital revenue stream for the Shire which enables us to deliver the program of services, however we must carefully balance this with many variables that are outside of our control."

As land re-valuations and rates increases vary in each town-site, Council has approved the following concessional rates:

- Paraburdoo: 12.5%
- Tom Price: 12.5%
- Onslow: 30%

Information packs and application forms have been sent to all eligible ratepayers, with a number of concessions already being processed. If you are a ratepayer and have any questions or would like to discuss your rates in more detail please do not hesitate to contact the Shire's Rates Officer on **9188 4444**.

## HOW COUNCIL SET PROPERTY RATES

Each council collects rates from residents and businesses in its municipality to help fund local infrastructure and services. Calculating how much each property owner pays in rates involves determining the total amount of rate revenue required and dividing this across the total value of all rateable properties to establish a rate in the dollar.

The rate in the dollar is then applied against each individual property value to calculate how much each property owner pays.

## PROPERTY VALUATIONS

Property values are determined by independent professional valuers who are appointed by a council or by the State Valuer General. These valuers assess the market value of each property in line with guidelines laid down by the State Valuer General.

## HOW PROPERTY RATES ARE CALCULATED

A property's rates are calculated by multiplying the valuation of the property by the rate in the dollar. For example, if the Gross Rental Value of a property is \$26,000 (\$500 rent per week) and the council rate in the dollar is set at \$0.0518 cents, the rate bill would be \$1,347 (\$26,000 x \$0.0518c).

## APPROVAL FROM MINISTER FOR LOCAL GOVERNMENT

Once Council have determined the proposed Rating Strategy for the financial year it then must be lodged for approval by the Minister for Local Government. To gain approval, the rating strategy must meet the established criteria as determined in the Local Government Act 1995.

# Cyclone Alert System

**PREPARE,  
TAKE ACTION,  
RECOVER**

## KEEP INFORMED, STAY SAFE

When a cyclone threatens, community alerts will be issued by the Department of Fire and Emergency Services. The alert level changes to reflect the increasing risk to your life and advises what you need to do before, during and after a cyclone. The four alert stages are – blue, yellow, red and all clear.

### COMMUNITY ALERT LEVELS

<b>BLUE ALERT</b>	Get ready for a cyclone	You need to start preparing for cyclonic weather.
<b>YELLOW ALERT</b>	Take action and get ready to shelter from a cyclone	You need to prepare for the arrival of a cyclone.
<b>RED ALERT</b>	Take shelter from the cyclone	You need to go shelter immediately.
<b>ALL CLEAR</b>	The cyclone danger has passed but take care	Wind and storm surge dangers have passed but you need to take care to avoid the dangers caused by damage.

**DO NOT DRIVE ON RED ALERT – IT IS DANGEROUS**

Cyclones can be unpredictable and can intensify rapidly. You need to prepare for a cyclone impact even if it does not look like it is coming your way.

### You and your family must know

- The four stages of the alert system and what they mean
- Where to access the latest alert level information
- What tasks or actions need to be done on each alert level



### During a cyclone you can get alert information from

- Emergency Alerts at [www.dfes.wa.gov.au](http://www.dfes.wa.gov.au)
- DFES Information Line on **13 DFES** (13 3337)
- [www.bom.gov.au](http://www.bom.gov.au) or by calling the Cyclone Warning Advice Line on **1300 659 210**
- ABC radio and other local media

**LISTEN CAREFULLY**  
and do what the alerts say to help keep safe.

For more information visit [www.dfes.wa.gov.au](http://www.dfes.wa.gov.au) or contact **DFES Community Engagement 9395 9816**



Government of **Western Australia**  
Department of Fire & Emergency Services





CYCLONE AND FLOOD

# Emergency Kit

FACTSHEET

02

PREPARE,  
TAKE ACTION,  
RECOVER

## SUPPLIES FOR SHELTERING DURING A CYCLONE

An **Emergency Kit** is essential for short term survival (up to four days) whether you choose to stay at home or need to relocate to safer accommodation. An Emergency Kit is a collection of items that are essential for your household's needs in the event of any emergency.

Keep your kit in a sturdy bag or waterproof storage box, which is stored in a safe and easily accessible place.

### START YOUR EMERGENCY KIT with the following items

- Medication
- First aid kit
- Toiletries, sanitary supplies
- Drinking water (to last at least four days)
- Canned food (to last at least four days)
- Portable, battery operated AM/FM radio
- Waterproof torch
- Spare batteries

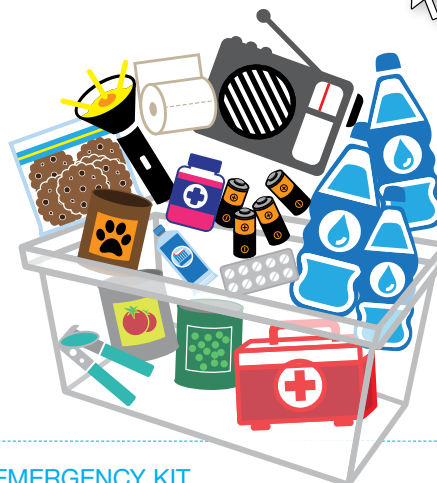
**REMEMBER TO CONSIDER YOUR PETS.**  
What do they need?  
These items should be included in your Emergency Kit.



### You and your family must

- Prepare an Emergency Kit
- Check and replace food and water every 12 months
- Review your kit when a cyclone or flood alert is issued

A full list of Emergency Kit items can be found at [www.dfes.wa.gov.au](http://www.dfes.wa.gov.au)



### A RELOCATION KIT IS AN ADDITION TO YOUR EMERGENCY KIT.

A Relocation Kit contains the items you need to add to your Emergency Kit when you need to relocate to safer accommodation. Go to **Fact Sheet 3** to find out about Relocation Kits.

For more information visit [www.dfes.wa.gov.au](http://www.dfes.wa.gov.au) or contact **DFES Community Engagement 9395 9816**



Government of Western Australia  
Department of Fire & Emergency Services



# Snake safety and your local Reptile Removers

It is well and truly that time of the year when snakes become more active as they search for food. However it is pretty rare for a snake to stay in the same spot for too long, unless the conditions are perfect. There are a few things you can do to reduce the chance of hosting the perfect snake haven;

1. Make your house and property less attractive to snakes. Remove any debris or woodpiles, cut back long grass and shrubbery, remove leaf litter and block any holes around the outside of your house that may look like a safe spot to hide.
  2. Keep pests under control. Rodents are a good food source for snakes – less food means less snakes.
  3. Bird aviaries and chook pens can be very attractive to snakes. Keep your enclosure secure, clean and free of rodents.
  4. Unfortunately, our pets don't deter snakes. If possible, keep cats inside and if you have the opportunity for snake avoidance training for dogs, it is a great idea.
  5. Stay up to date with current snake bite first aid for humans and pets and keep a snake bite kit on hand.
  6. **Keep a list of your local snake handlers on your phone, fridge, and in your workplace.**
- Back away to a safe distance
  - Move children and pets away
  - Call your local snake handler
  - Keep an eye on the snake (from a safe distance) so when the handler arrives it can be easily captured
- DON'T** attempt to catch the snake
- DON'T** assume the snake is dead
- If you do come across a snake, firstly, don't panic!

## Snake Catchers

### ONSLow

Tahi Morton	0407 247 435
Andrew Price	0418 916 001
Jason Potts	0427 376 947
Sarah Nilen	0456 358 433
Adam Conwell	0409 091 954
Owen Lupo	9159 9100
Theron Seyler	0448 866 592
Trevor Callaghan	0408 650 097

### TOM PRICE

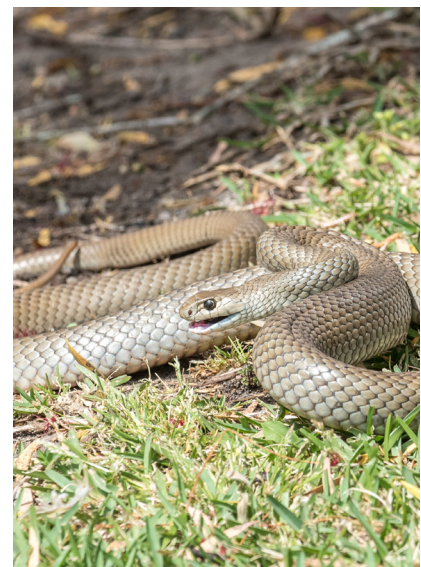
Jenny Ryles	0409 112 218
Shane Gordon	0438 018 938
Jay Picks	0437 487 507
Michelle Kay	0458 335 373
Rebekah Revesz	0448 125 988
Daniel Hellbusch	0407 448 053
TP Garden & Maint.	0400 314 481

### PANNAWONICA

Marty Clayson (Team B)	0408 000 627
Hayley Ewin (Team B)	0437 537 471
Eilish McNulty (Days/Town)	0488 427 997
Mick Gallanagh (Team D)	0448 995 153
Mel Gallanagh (Team D)	0404 435 440

### PARABURDOO

Paraburdoo ESO (24hrs)	9143 4223
Channar ESO (24hrs)	9143 4800



# In the event of a snake bite

## FIRST AID DO'S

### Management

1. Follow DRSABCD
2. Reassure the patient and ask them not to move
3. Apply a broad crepe bandage over the bite site as soon as possible
4. Apply a pressure bandage
  - » (firm heavy crepe or elasticised roller bandage)
  - » start just above the fingers or toes of the bitten limb, and move upwards on the limb as far as can be reached (include the snake bite)
  - » apply tightly without stopping blood supply to the limb.
5. Immobilise the bandaged limb with splints
6. Ensure the patient does not move
7. Write down the time of the bite and when the bandage was applied
  - » stay with the patient
  - » check circulation in fingers or toes
  - » manage for shock

## IN AN EMERGENCY, CALL TRIPLE ZERO (000) FOR AN AMBULANCE

For more information on St John first aid training and kits, visit [www.stjohn.org.au](http://www.stjohn.org.au) or free call 1300 360 455

## FIRST AID DON'T'S

1. Don't wash the bite site as the hospital will need to take a swab test to identify the snake.
2. Do not cut the bite site or suck the blood out, the tongue and mouth are quickest to absorb moisture.
3. Do not bleed the site of the bite.
4. Do not use a tourniquet or apply a bandage so tightly it cuts off blood flow

# See it, report it!

The Customer Action Request (CAR) is an online form designed to enable people to directly report issues to the Shire that need our attention.

If you see something you think we should know about, please visit the Shire's website at [www.ashburton.wa.gov.au](http://www.ashburton.wa.gov.au) and select the 'See it, report it (CAR form)' link on the home page.

Your completed CAR will be sent to the relevant Shire officer and we will endeavour to provide you a response within five business days.



This activity met Community Goal 4 of the Corporate Business Plan, Quality Services and Infrastructure




**FIGHT the BITE**

**PROTECT YOURSELF** *against* **DISEASE-CARRYING MOSQUITOES**

**COVER UP. REPEL. CLEAN UP.**

-  WEAR LONG, LOOSE-FITTING, CLOTHING.
-  USE INSECT REPELLENT.
-  REMOVE THE WATER THEY BREED IN.

This is an initiative of the Government of South Australia. This has been reprinted with permission from SA Health. Supported by the Peel Mosquito Management Group.

Mosquitoes can spread serious and potentially deadly diseases. For more information contact the Department of Health visit: [www.health.wa.gov.au/FIGHTTHEBITE](http://www.health.wa.gov.au/FIGHTTHEBITE)

 Government of Western Australia  
Department of Health





# Upcoming Events

Date	Event	Location
<b>NOVEMBER</b>		
Friday 30 November	Community Christmas Party and Carols	Paraburdoo
<b>DECEMBER</b>		
Sunday 2 December	Community Christmas Carols	Tom Price
Friday 7 December	Community Christmas Carols	Pannawonica
Saturday 8 December	Christmas Festivities	Onslow
Sunday 9 December	Christmas Lights	Tom Price
Sunday 9 December	Christmas Lights	Paraburdoo
Friday 14 December	Christmas Lights	Pannawonica
Tuesday 25 December	Christmas Day	All towns
Wednesday 26 December	Boxing Day	All towns
<b>JANUARY</b>		
Mon 21 Jan – Thur 31 Jan	School Holiday Program	Tom Price, Paraburdoo and Pannawonica
Saturday 26 January	Australia Day	All towns
<b>FEBRUARY</b>		
Monday 4 February	School Term 1 Commences	All towns
Thursday 14 February	Valentine's Day	All towns

*Wishing everyone a safe  
and merry Christmas*

## Administration Centre

Poinciana Street, Tom Price WA 6751  
PO Box 567

Phone (08) 9188 4444  
Freecall 1800 679 232  
Fax (08) 9189 2252  
Freecall Fax 1800 655 086

Email [soa@ashburton.wa.gov.au](mailto:soa@ashburton.wa.gov.au)

[www.ashburton.wa.gov.au](http://www.ashburton.wa.gov.au)

Inside Ashburton Publication is produced by the Shire of Ashburton

**Editor:** Narelle Steele

**Contributors:** Rio Tinto, Chevron, Gavin Douglas, Royal Life Saving Association, WA Tennis, Kyle Cameron

**Template Design:** Design Collision

**Designer for this issue:** Scott Print

**Photography contributors:** Marg Bertling, Elle Lukale, Tom Price Tennis Club, Dane Simpson

Find us on Facebook: [facebook.com/shireofashburton](https://facebook.com/shireofashburton)

DISCLAIMER: This newsletter is for general information purposes only. The views expressed in this newsletter are not necessarily those of the Shire of Ashburton. The Shire has taken all measures to ensure the contents in this publication is correct, however it accepts no responsibility for the accuracy or the completeness of the material. Readers are advised not to rely solely on this information when making any decision. The Shire of Ashburton reserves the right to change the publication as it sees fit. The Shire of Ashburton disclaims any responsibility or duty of care towards any person for loss or damage suffered as a result of this newsletter.

COPYRIGHT: The contents of this newsletter are subject to copyright under the laws of Australia. The copyright in materials in this newsletter as a whole is owned by the Shire of Ashburton. Third parties may own the copyright in some materials incorporated into this newsletter. In reference to the Copyright Act 1968, please feel free to reproduce parts of this newsletter for personal, educational or any other non-commercial purposes, provided that the Shire is aware of this.